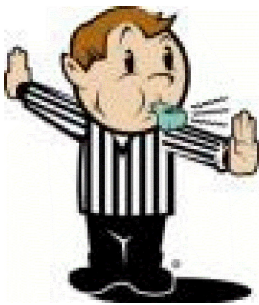




**LACROSSE CANADA**

**LACROSSE CANADA OFFICIATING PROGRAM  
INTRODUCTION TO THE THREE-OFFICIAL SYSTEM**





**LACROSSE CANADA**

**Understanding the rationale behind a 3-official system:**

**Mentorship**

- a. The Goal is to develop Box Lacrosse Officials with a mentorship program.**
- b. The CREW CHIEF #1 shall have full control of the game and the staff both on and off the playing floor. The off-floor Officials are part of your officiating crew.**
- c. Official #2 or the Assistant Official is the second in charge and shall take over the position of Crew Chief in cases of injury, illness or any other unforeseen situation with the Crew Chief.**
- d. Official #3 must prepare in the same way as the crew-chief pregame and participate post game discussions.**



**LACROSSE CANADA**

## **Consistency**

**Bring the same game every game.**

**When you walk into a room of people that know you, they know what they are getting.**

**When you run onto the playing surface the players should know what they are getting as you strive to bring the same game to table each night.**

**Work with your crew on three things every game: a rule and a signal and a Referee mechanic . If one of these situations happen in your game, you are ready for them. Work on this throughout the season and highlight 3 new items each game.**

**If you are not sure ask your Crew Chief.**



**LACROSSE CANADA**

## **Consistency**

**Do not watch the ball the ball will look after itself.**

**See the full picture not just what is in front of you.**

**Try to pace yourself to be in the right place at the right time. Being too far away from a call or too close place limitations on your decision making.**

**Practice you signals find a place in your house where you can work on this.**



**LACROSSE CANADA**

## **Game Management**

**Referee the game not the score.**

**Bring the same game every game.**

**Be proactive.**

**Expect the unexpected.**

**Who is playing tonight and is there a history? Read, Review, Remember**

**An important part of officiating is good communication.**

**The Referee's communication with participants and others is undertaken in a range of ways which include:**



**LACROSSE CANADA**

## **Game Management**

**Voice - communicating decisions/rulings**

**Whistle - communicating to participants to do something**

**Indications - communicating a decision nonverbally**

**Body language - communicating a feeling/emotion**



**LACROSSE CANADA**

- Provides additional coverage in areas that are “often missed”
- Comes with specified areas of responsibility
- Comes with added expectations –reducing the number of misses
- Has dedicated mechanics for LO / SSO / TO in all circumstances

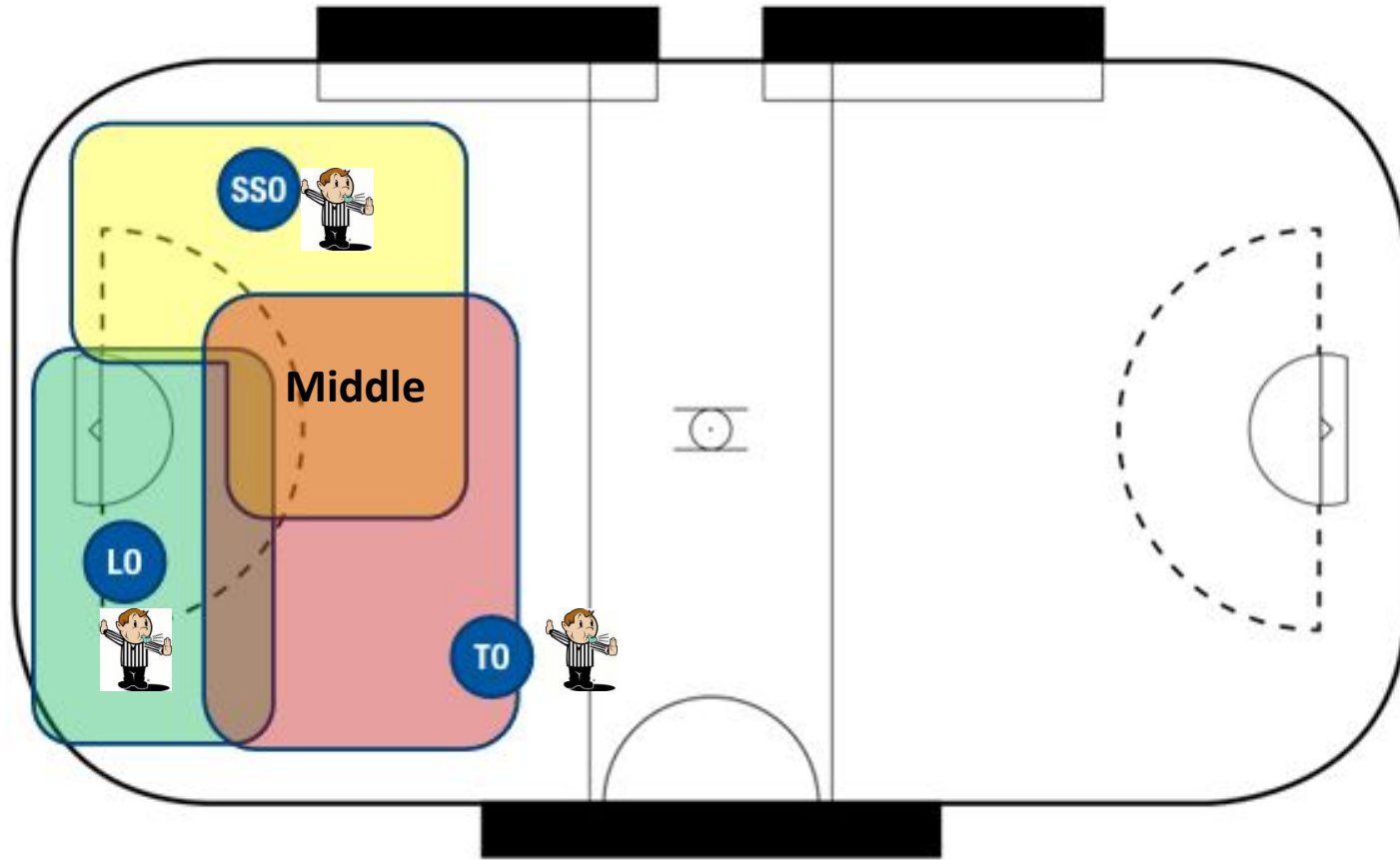


**LACROSSE CANADA**

- The action area is the middle of the floor where most of the “off-ball” infractions occur late hits, moving screens, holding, etc.
- The three-official system is designed to provide coverage to this area of the floor to ensure that penalties/violations aren’t missed
- The SSO and TO are largely responsible for fouls occurring in this area during settled offense situations



# LACROSSE CANADA

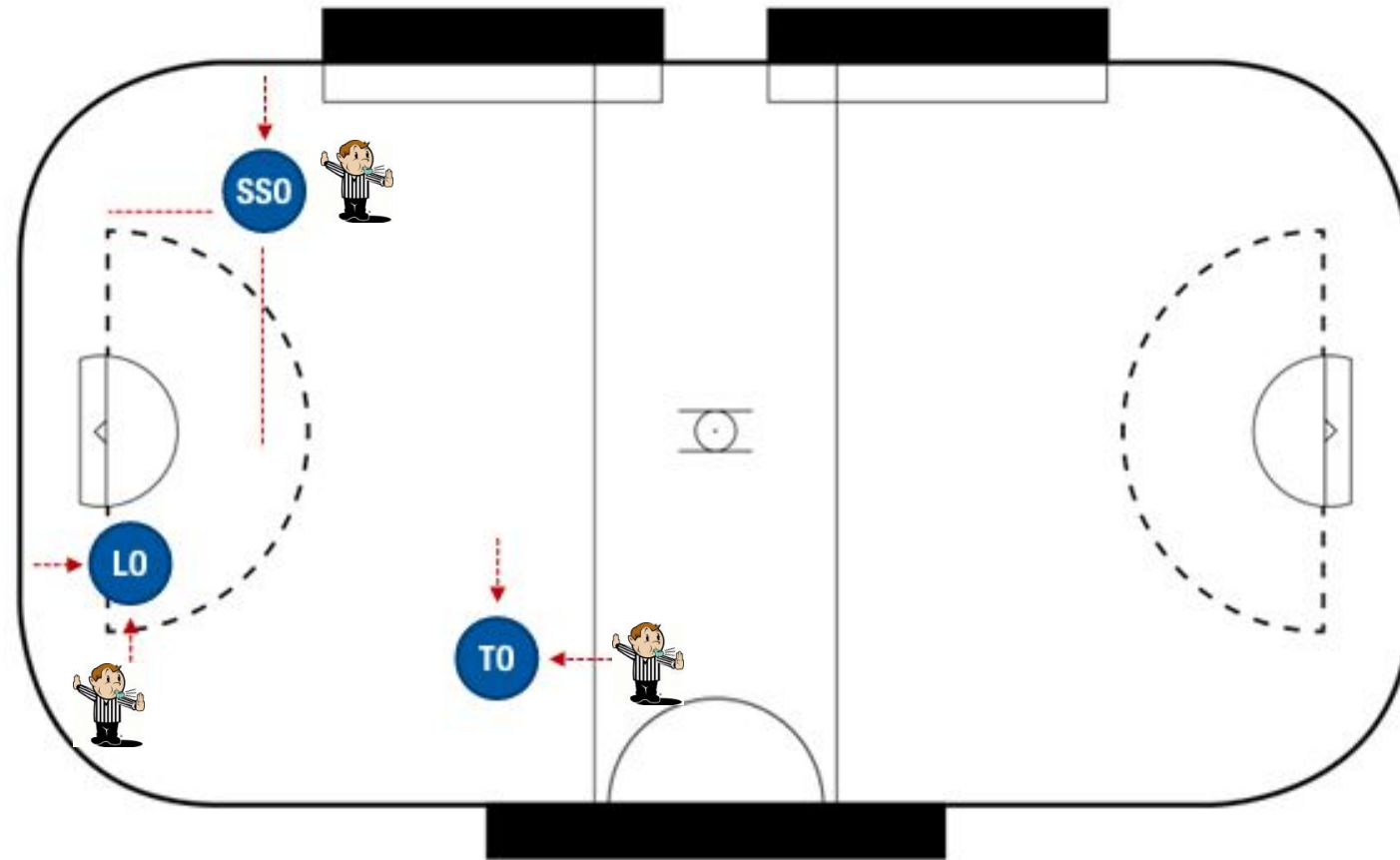


**Single-Side Official:**

Positioned at 45° angle to the closest post, just inside the top of the dotted line

**Lead Official:**

Positioned 1-2 steps above GLE, within the dotted line to create the best possible sightlines

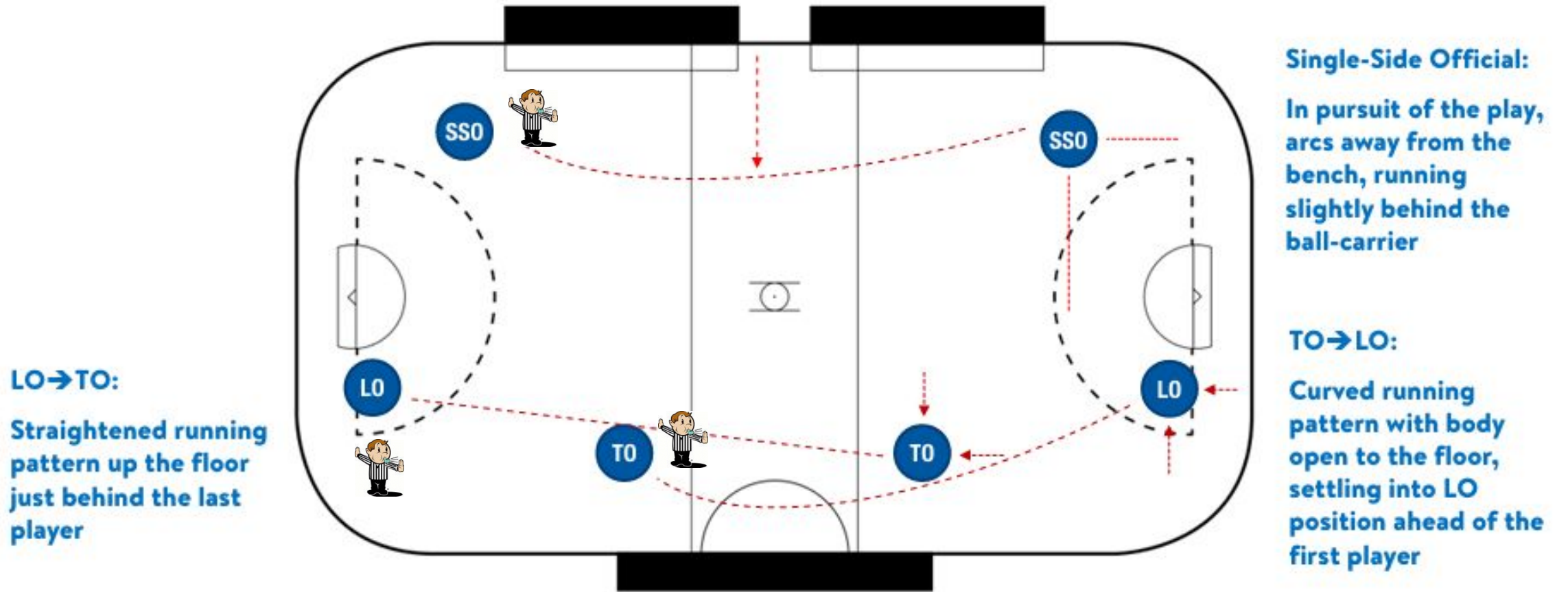


All positions move N/S and E/W while reading the play – no one is stationary, but movements are deliberate with the ball/players

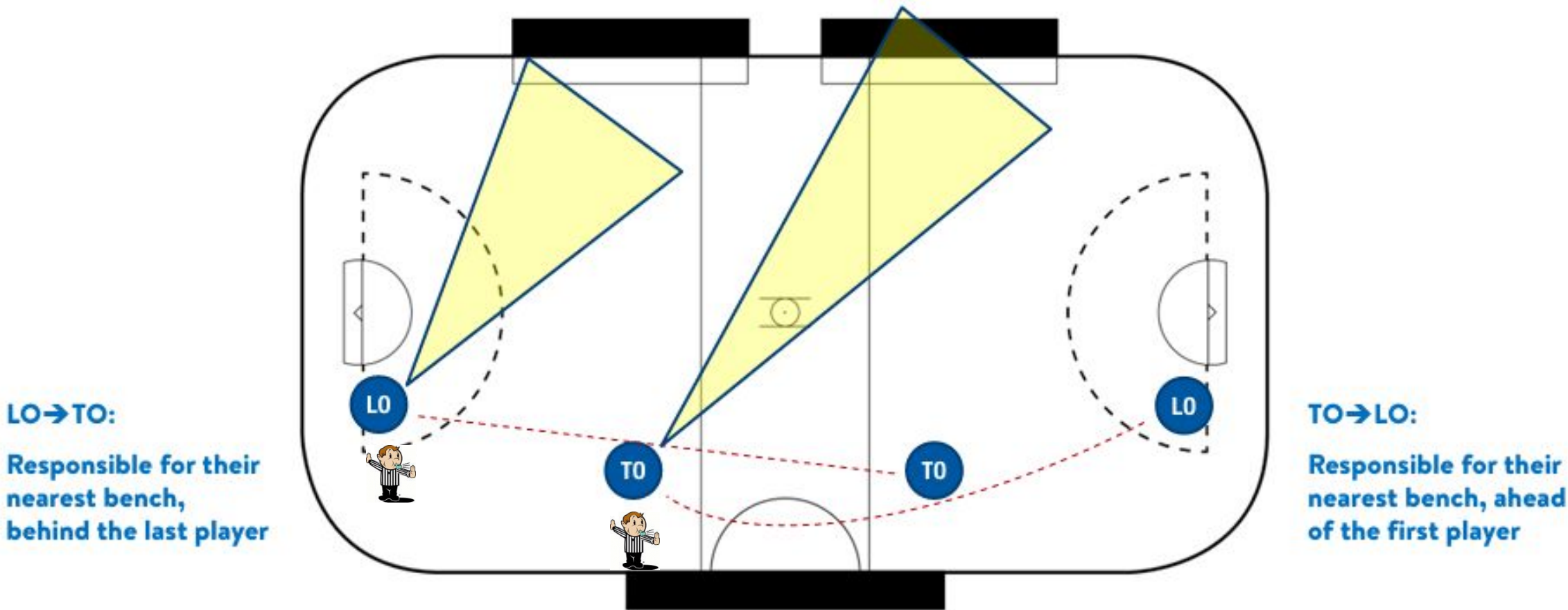
**Trail Official:**

Positioned nearer to the side boards to create a wide angle that allows for sightlines through players

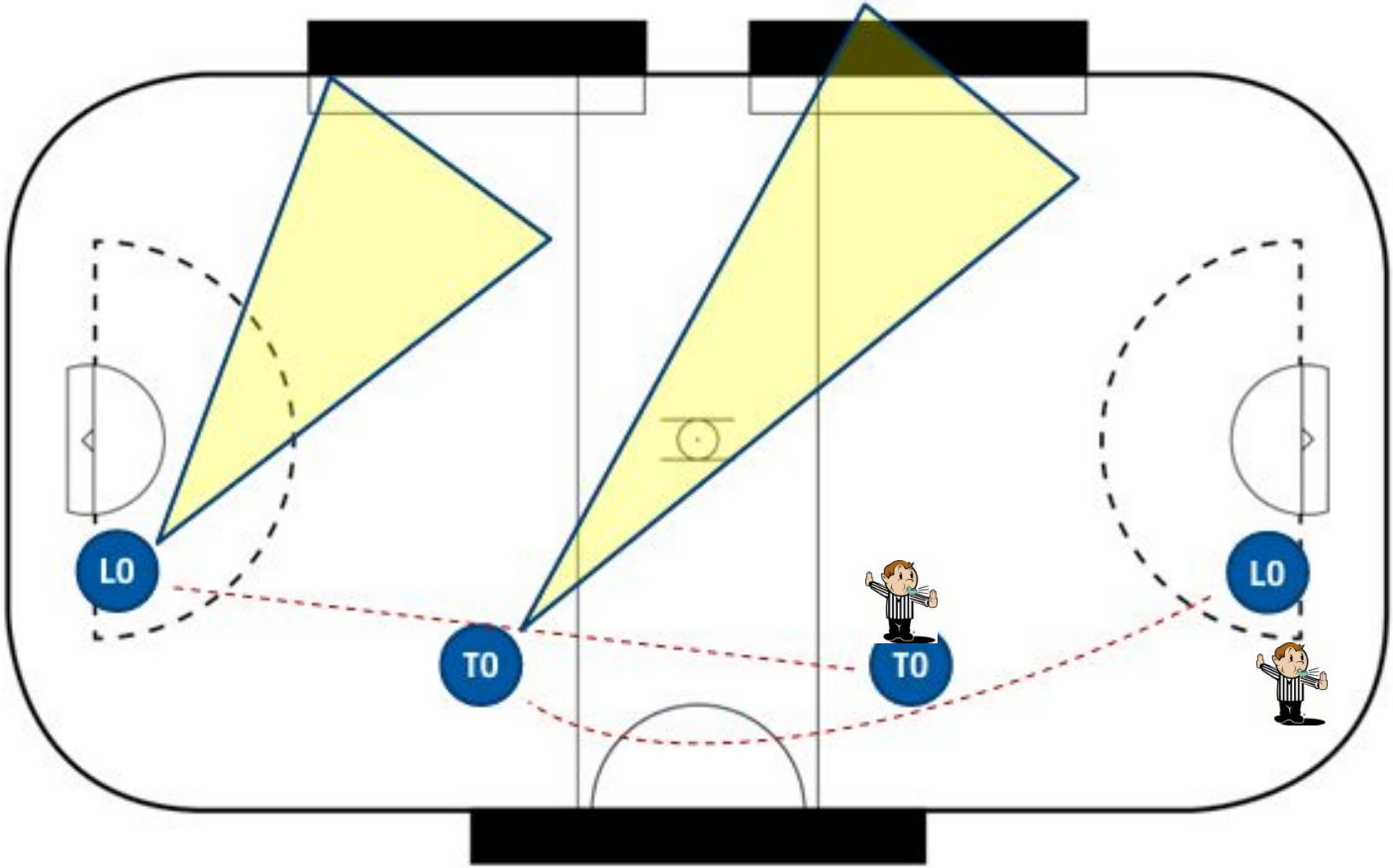
# TRANSITION IN THE THREE-OFFICIAL SYSTEM



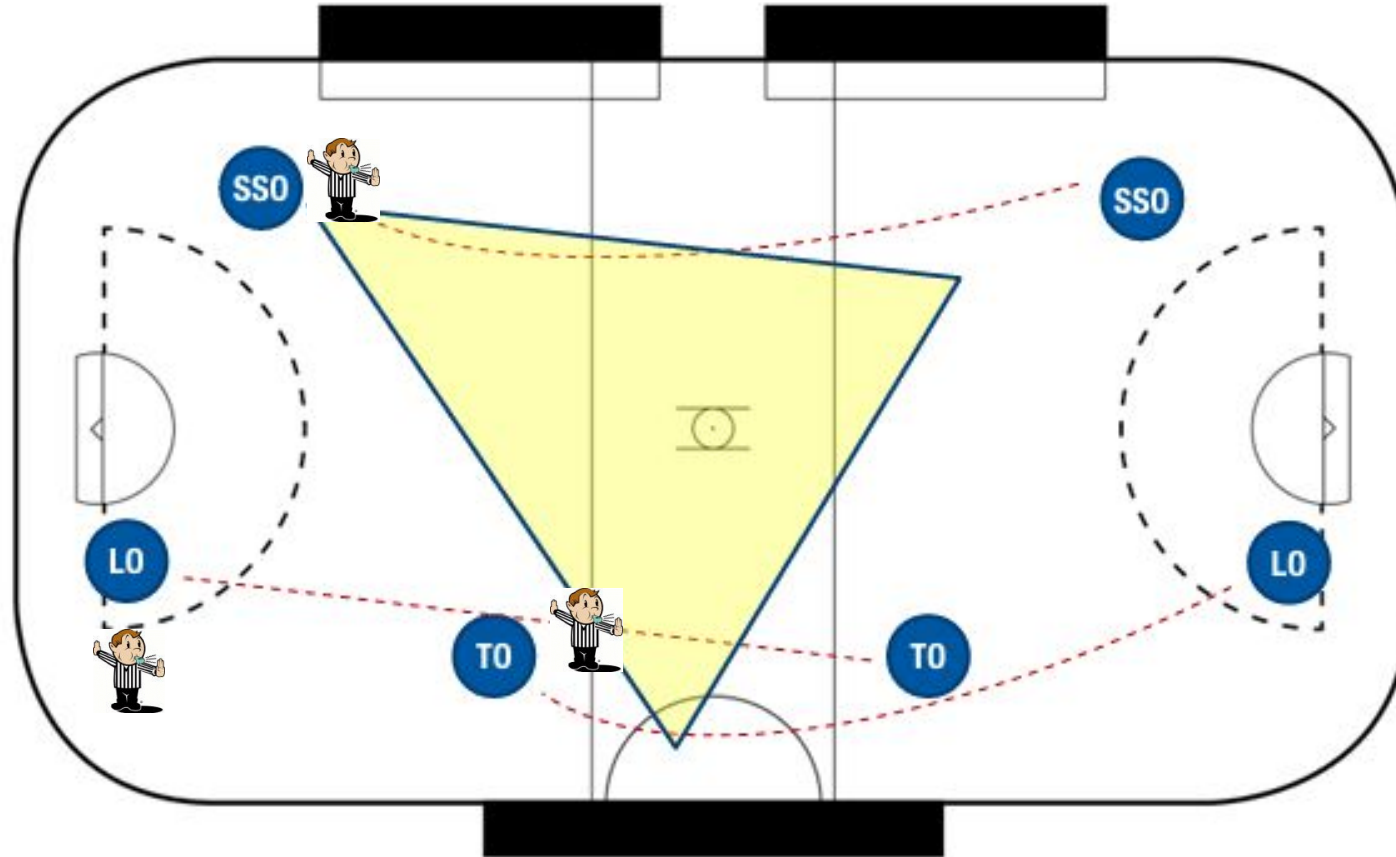
# TRANSITION IN THE THREE-OFFICIAL SYSTEM



# TRANSITION IN THE THREE-OFFICIAL SYSTEM



# TRANSITION IN THE THREE-OFFICIAL SYSTEM



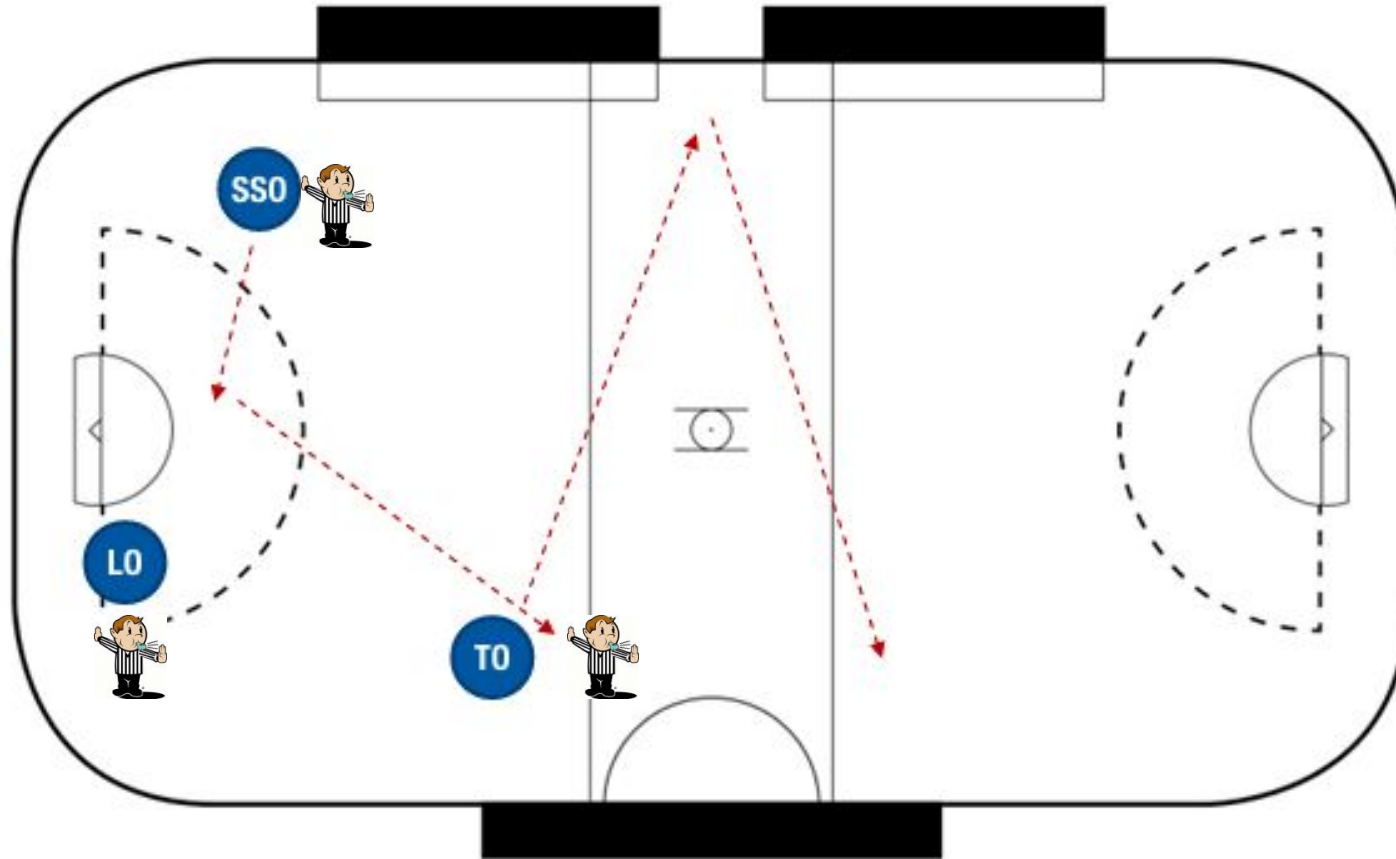
SSO is primarily on-ball, movement up the floor is “in tight pursuit of the play” – not with or ahead of the play

Where players “stay deep”, adjust back to the two-official system (SSO assumes the TO role, and the real TO stays back with the cherry-pickers)

# POST-GOAL IN THE THREE-OFFICIAL SYSTEM

## SSO→LO:

Immediately goes to the goal celebration area, and moves with those players to “hand them off” to the TO who is positioned between the benches, then goes to the near restraining line



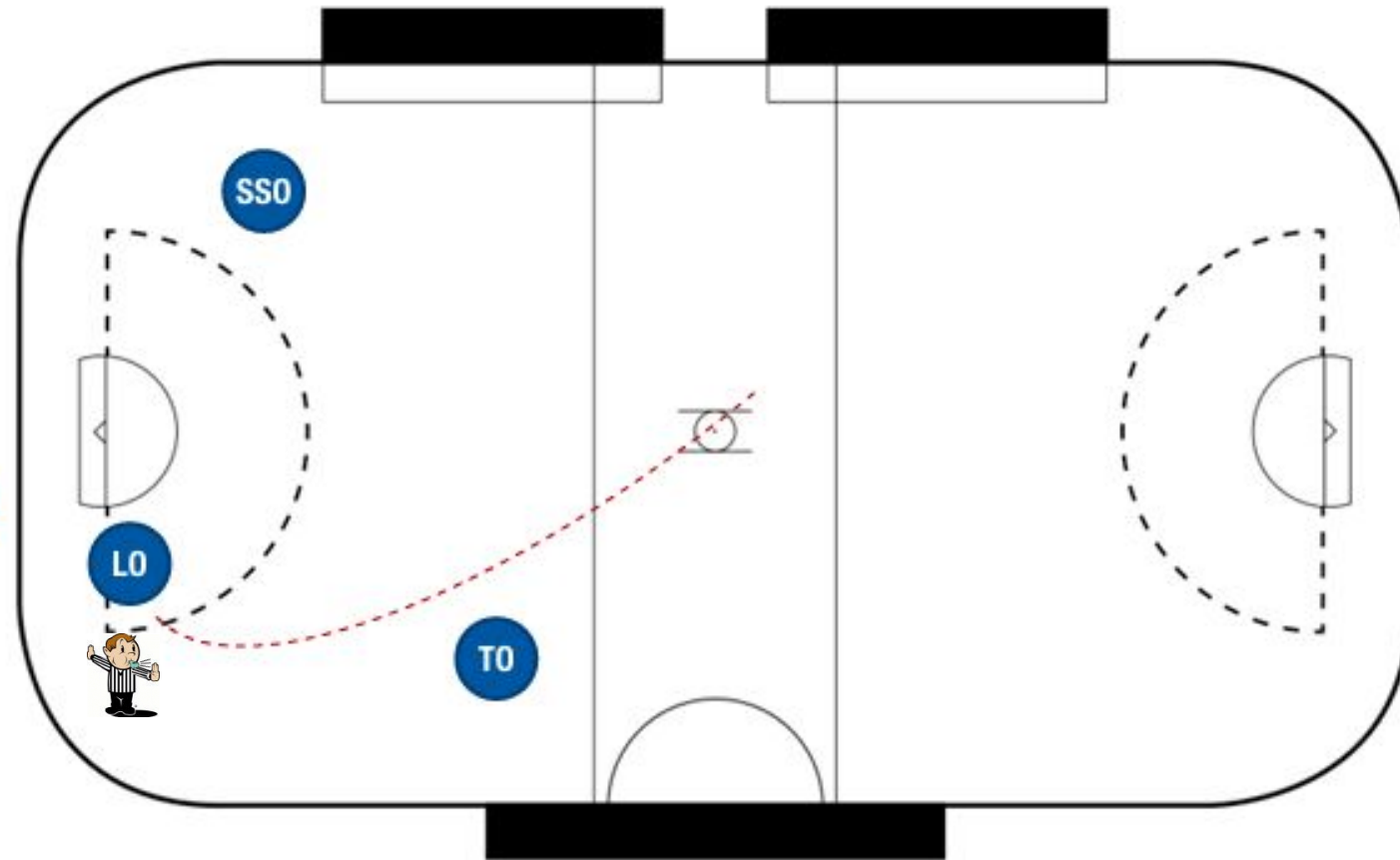
## TO→TO:

Immediately goes to the space between the benches and monitors all line changes, then goes to the far restraining line

# POST-GOAL IN THE THREE-OFFICIAL SYSTEM

**LO→SSO:**

Retrieves the ball and goes to the face-off, always facing in the same direction regardless of which net has been scored on



# PENALTIES IN THE THREE-OFFICIAL SYSTEM

- **Official who calls the penalty takes the penalty to the box and restarts play – no change from normal play**
- **Other two officials can set up as LO and SSO – should be totally aware during this stoppage with coverage at the bench, crease, etc. as needed**
- **Awareness of game clock is important – all Qualifiers games are running time so it's important to be effective in managing penalties**
- **Huddles can be useful to get the call right, provided they are quick**

# POST-GOAL IN THE THREE-OFFICIAL SYSTEM

**LO→SSO:**

**Retrieves the ball and goes to the face-off, always facing in the same direction regardless of which net has been scored on**

